



# KM-116BAJ

## SELF-CONTAINED CUBER WITH BUILT-IN STORAGE BIN



KM-116BAJ  
07/19/19  
Item # 13552

**W x D x H**  
23<sup>3/4</sup>" x 24" x 39"\*  
\*including 6" legs

ADA Compliant

**KMEdge**  
DESIGN

**KM-116BAJ** ★  
Air-Cooled



## Features

- ▶ Individual crescent cube
- ▶ Stainless steel evaporator
- ▶ CycleSaver™ design

- Up to 125 lbs. of ice production per 24 hrs
- Built-in storage capacity of 1.8ft<sup>3</sup>/53 lbs.\*
- Durable stainless steel exterior
- Front-in, front-out airflow with removable air filter
- Slide in door
- Power switch accessible without panel removal
- Built-in installation possible
- 6.5 ft. (2000 mm) power cord with NEMA 5-15P plug
- H-GUARD Plus Antimicrobial adds extra protection to the ice scoop (included)
- EverCheck™ alert system
- R-134a Refrigerant
- *Optional Drain pump assembly - HS-5061*

### Warranty:

3 Year Parts & Labor on entire machine 5 Year Parts & Labor on Evaporator.  
5 Year Parts on Compressor; air-cooled condenser coil 1 Year - HS-5061 Drain  
Pump Assembly - Parts & Labor. Valid in United States, Canada, Puerto Rico and  
U.S. Territories. Contact factory for warranty in other countries.

Shipping:(LxWxH) 27" x 27" X 39" Volume: 16.45ft<sup>3</sup>

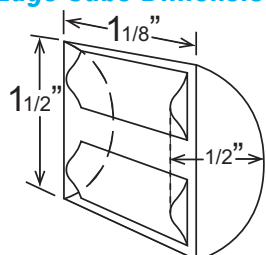
### ICE PRODUCTION

### WATER USAGE

### ELECTRICAL

Condenser	Model	Air / Water Temp		Potable	Condenser	kWh Used	Min. Circuit	Amperage	Voltage	Heat Rejection	Refrigerant	Net / Ship		
		Lbs. per 24 hours	70°/ 50°F	90°/ 70°F	Gal. per 100 lbs.								Gal. per 100 lbs.	per 100 lbs.
Air-Cooled	KM-116BAJ	125	70°/ 50°F	100	90°/ 70°F	20.0	N/A	8.10	15A	5.5A	115V/60/1	2,100	7.8 oz.	111 / 146

### KMEdge Cube Dimensions\*



\* approximate size in inches, image not to scale

### Operating Limits

- Ambient Temp Range 45 - 100°F
- Water Temp Range 45 - 90°F
- Water Pressure 10 - 113 PSIG
- Voltage Range 104 - 127V

### Service

- Allow enough space at rear for water supply and drain connections, at least 12" (30 cm) clearance at front and at least 0.6" (15 mm) clearance at top for maintenance.

### Plumbing

- Icemaker Water Supply Line: Minimum 1/4" Nominal ID Copper Water Tubing or Equivalent
- Icemaker Drain Line: Minimum 3/4" Nominal ID Hard Pipe or Equivalent

### Water Filter

Please refer to water filter spec sheet for recommended configurations.

Hoshizaki reserves the right to change specifications without notice.



# KM-116BAJ

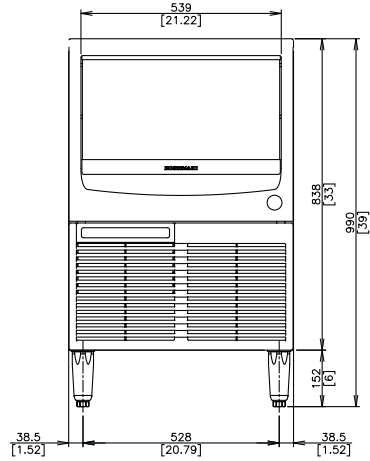
**SELF-CONTAINED CUBER  
WITH BUILT-IN STORAGE BIN**



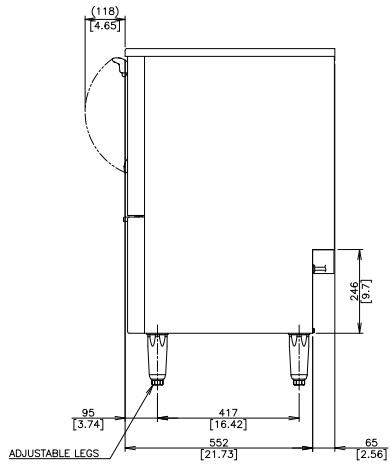
KM-116BAJ  
07/19/19  
Item # 13552

mm  
[inch]

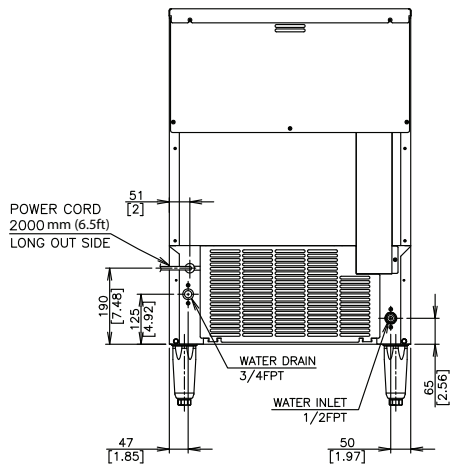
FRONT VIEW



SIDE VIEW



REAR VIEW



## TOP VIEW

